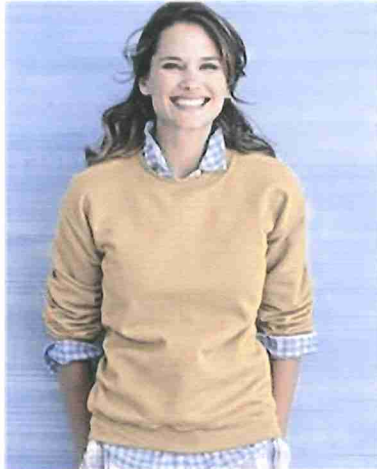


Gildan - Ultra Blend Crewneck Sweatshirt - 12000



- 9.3 oz., 50/50 cotton/polyester
- Safety Green and Safety Orange are both compliant with ANSI high visibility standards
- Pill-resistant and softer air-jet spun yarn
- Double-needle stitched collar, shoulders, armholes, cuffs and waistband

Colors



Finished Measurements

	S	M	L	XL	2XL	3XL
Body Length	26	27	28	29	30	31
Body Length Tolerance	1	1	1	1	1	1
Body Width	20	22	24	26	28	30
Body Width Tolerance	1	1	1	1	1	1

Full-Zip Sweatshirt F259



This comfortable sweatshirt offers maximum versatility with full-zip detailing. The full athletic cut gives freedom of movement and the colorfast fabric keeps colors true wash after wash.

- 9-ounce, 60/40 ring spun combed cotton/poly
- Fully coverseamed
- Rib knit cuffs and waistband
- Set-in sleeves
- Front slash pockets
- Charcoal Heather and Navy have antique brass finished zipper
- Athletic Heather and Black have antique nickel finished zipper

CARE INSTRUCTIONS

Machine wash cold, with like colors. Do not bleach. Tumble dry low. Warm iron if necessary.

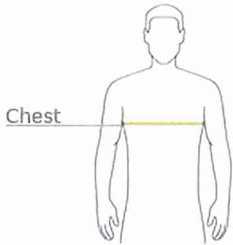


front



back

HOW TO MEASURE



CHEST
With arms down at sides, measure around the upper body, under arms and over the fullest part of the chest.

SIZE CHART

	XS	S	M	L	XL	2XL	3XL	4XL
Chest	32-34	35-37	38-40	41-43	44-46	47-49	50-53	54-57

COLOR INFORMATION



Athletic Heather
PMS No Match



Black
PMS Process Black



Charcoal Heather
PMS No Match



Navy
PMS 532C

Ladies Flatback Rib Full-Zip Jacket L221



The luxurious look and feel of this style extends beyond the weekend. It mixes effortlessly with casual and business attire alike. With a rich, subtle texture, this flatback rib style is finished with impeccable details, making it perfect for a resort escape or around the office.

- 10-ounce, 85/15 cotton/poly flatback rib
- Gently contoured silhouette
- Princess cut
- Twill-trimmed neck
- Dyed-to-match zipper
- Open cuffs and hem

CARE INSTRUCTIONS

Machine wash cold. Wash with like colors. Do not bleach. Tumble dry low. Warm iron if necessary.



front



back

SIZE CHART

	XS	S	M	L	XL	XXL	3XL	4XL
Bust	17	18	19	20	21 1/2	23	26	28 1/2
Body Length	24 1/4	24 3/4	25 1/4	25 3/4	26 1/2	27 1/4	30 1/4	31 1/4
Sleeve Length	32	32 1/2	33	33 3/8	33 3/4	34 1/8	34 1/2	34 7/8

COLOR INFORMATION



Black
PMS Process Black



Harbor Blue
PMS 648 C

Ivory



Navy



True Red
PMS 207 C

1/4-Zip Sweatshirt F253



Designed for lasting good looks, this athletic cut sweatshirt is colorfast with minimal shrinkage.

- 9-ounce, 60/40 ring spun combed cotton/poly
- Athletic Heather locker patch
- Twill-taped neck
- Set-in sleeves
- Antique brass finished zipper
- Rib knit cuffs and waistband

CARE INSTRUCTIONS

Machine wash cold. Wash with like colors. Do not bleach. Tumble dry low. Warm iron if necessary.

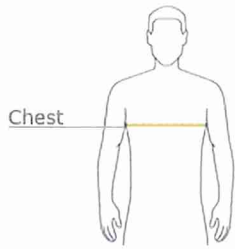


front



back

HOW TO MEASURE



CHEST

With arms down at sides, measure around the upper body, under arms and over the fullest part of the chest.

SIZE CHART

	XS	S	M	L	XL	2XL	3XL	4XL	5XL	6XL
Chest	32-34	35-37	38-40	41-43	44-46	47-49	50-53	54-57	58-60	61-63

COLOR INFORMATION



Athletic Heather
PMS 435 C



Black
PMS Process Black



Brown



Charcoal Heather
PMS 411 C



Maroon
PMS 7428 C



Navy
PMS 532C



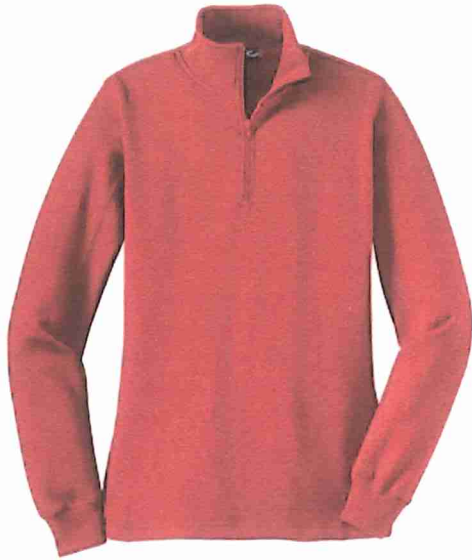
Red
PMS 187C



Royal
PMS 661C

White
PMS 663 C

Ladies 1/4-Zip Sweatshirt LST253



A stylish feminine fit and flatlock stitching details make this new sweatshirt stand out. A rib knit cadet collar and 1/4-zip add to its appeal. Colorfast with minimal shrinkage, this casual essential is made to last.

- 9-ounce, 60/40 ring spun combed cotton/poly
- Rib knit collar and cuffs
- Twill-taped neck
- Set-in sleeves
- Dyed-to-match zipper
- Open hem

CARE INSTRUCTIONS

NEW Sport-Tek® - Ladies 1/4-Zip Sweatshirt. LST253

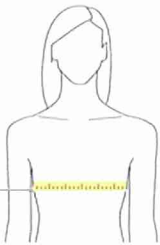


front



back

HOW TO MEASURE



Bust

BUST

With arms down at sides, measure around the upper body, under arms and around the fullest part of the bust.

SIZE CHART

	XS	S	M	L	XL	XXL	3XL	4XL
Size	2	4/6	8/10	12/14	16/18	20/22	24/26	28/30
Bust	32-34	35-36	37-38	39-41	42-44	45-47	48-51	52-55

COLOR INFORMATION



Athletic Heather



Black



Brown



Charcoal Heather



Navy



Pink



Red



Royal



White